

Maximizer 4B Asphalt Distributor

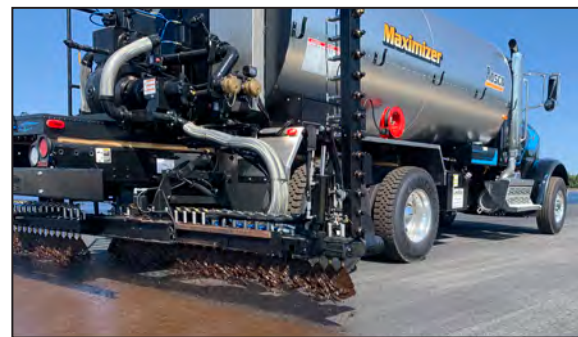
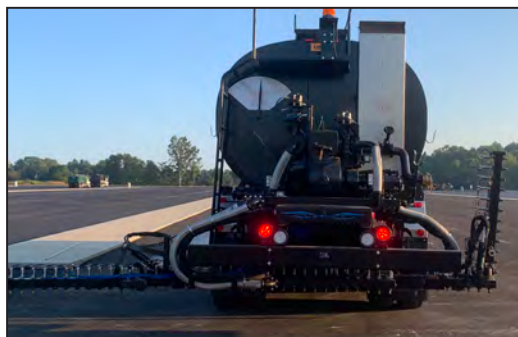
Rosco
A LeeBoy Company



Reach your full potential with the new Rosco Maximizer 4B. This trusted machine features a 24ft fully circulating, folding and extending spraybar as well as the user-friendly attributes you've come to love in the Rosco Distributor family. In-cab controls with automatic application rate control ensure consistent emulsion coverage. The large color display allows operators to monitor vitals, oversee width changes and engage the enviro-flush clean out system. With multiple tank capacities and an array of options including an oil heating system, each truck can be customized to fit your exact requirements.

Performance Features:

- 24' (7.3 m) Fully Circulating, Folding & Extending Spraybar
- Automatic In-Cab Controls
- Internal Spraybar Valves
- 560 gallons per minute, Viking Asphalt Pump
- Enviro-Flush Clean Out System
- Straight-Line Start and Stop
- Accurate Application Regardless of Spraybar Width or Speed
- 12 Presets for Application Rate
- Speed and Distance Monitoring
- External Controls & Pump Speed Display on Rear Fender



Maximizer 4B Asphalt Distributor Specifications



Tank Capacity	<ul style="list-style-type: none"> - 2,050 gallons (7,760 l) to 4,250 gallons (16,088 l) * Gallons listed are maximum tank capacities. Recommended tank capacities may be limited by 1.) Thermal expansion of materials. 2.) Density of materials. 3.) Truck/axle load ratings. For more detail, please contact your local Rosco Sales Representative or Dealer.
Tank	<ul style="list-style-type: none"> - Meets all applicable Federal DOT regulations - 10 gauge (3.4 mm) steel shell - 7 gauge (4.5 mm) steel reinforced, flanged heads - Seams are electrically welded
Insulation	<ul style="list-style-type: none"> - 2" (51 mm) rock wool with spacers to prevent compression - Protected by an aluminium jacket
Heat System	<ul style="list-style-type: none"> - Two diesel fired burners with electric ignition - 560,000 BTU per burner, per hour capacity
Asphalt Pump	<ul style="list-style-type: none"> - Viking, positive displacement pump - 560 gallon per minute (2,120 L)
Clean Out	<ul style="list-style-type: none"> - Enviro-flush allows circulation through asphalt pump, valves, distributing lines and spraybar - Material returned to tank for later use or disposal - 25 gallons (95 l) capacity
Spraybar	<ul style="list-style-type: none"> - Brass, slotted nozzles and valves are non-clogging - Quick-disconnect allows operator to change spray widths in 4" (102 mm) increments - 24' (7.3 m) full circulating bar, extendable spraybar - Two 8' (2.43 m) independently controlled, extending sections - Two 4' (1.2 m) fully circulating hydraulically folding wings - Nozzles: spaced 4" (102 mm) center on spraybar

Operator's In-Cab Controls	<ul style="list-style-type: none"> - Plus+1 CAN Bus control and onboard diagnostics - 7" (177 mm) 800 x 480, high-res color display - Automatic application rate control - Settings for flow, speed calibration, spraybar width, spraybar on/off control by section - Up to 12 application rate preset combinations - Readouts include FPM, GPM, total feet sprayed, total gallons sprayed, total sq. yards sprayed, flow and speed calibration, application rate, tank temperature, hour meter, spraybar width - Convenient external controls and pump speed display mounted on rear fender
Additional Standard Equipment	<ul style="list-style-type: none"> - Hand spray wand with a 25' (7.6 m) rubber hose - Front and rear dial contents gauge - 4" (102 mm) dial, internal pencil thermometers - Sample valve - Back up alarm - Ladder and platform assembly - Rear bumper to protect spraybar
Optional Equipment	<ul style="list-style-type: none"> - Installation for a customer supplied truck chassis - PTO transmission (required if not using front live power) - LPG burner, includes LP tank - Diesel burners with outfire protection and heat limit control - Oil heat system, pump, spraybar and sump - Washdown system with pump and hose, self-winding hose reel - Loading hose, 3" x 15' (76 mm x 4.572 m) flexible steel with quick couplers - Loading hose, 3" x 15' (76 mm x 4.572 m) rubber with quick couplers - LED working lights, qty 4 - Electric overnight heat, 240V single phase - Radar horn in lieu of GPS - Electronically actuated emulsion tank hand rails - Additional options available



VT LeeBoy, Inc. ■ 500 Lincoln County Parkway Extension ■ Lincolnton, NC 28092 ■ 704.966.3300
www.LeeBoy.com

LeeBoy and the LeeBoy logo are registered trademarks of VT LeeBoy, Inc. Equipment model names, slogans and subsidiary logos appearing in this collateral may be registered trademarks or the trademarks of VT LeeBoy, Inc. The technical data contained herein is subject to change due to continuous engineering and development. Accordingly, LeeBoy reserves the right to modify at any time. © 2019 VT LeeBoy, Inc. All rights reserved. BR-70031-EN

