

# 8530

## Heavy Commercial Paver

# *LeeBoy*<sup>®</sup>



## Trust LeeBoy.

As Dependable as Your Day is Long.



# Engineering Excellence



Designed with the paving professional in mind.

We are LeeBoy. The name behind the world's most dependable and productive commercial asphalt pavers. Driven by ingenuity, LeeBoy products are among the most trusted and requested in the industry. Because we understand what drives you and we deliver.

The rugged 8530 heavy commercial paver features the Legend HD PRO Screed. Weighing 4,150 lbs and having the ability to pave widths up to 15' 6", its heavy design produces superior mat quality in a variety of road and other pavement construction projects.

Independent hopper wings framing a 9-ton hopper, reversible augers and conveyors, hydraulic tow point cylinders and under auger

material cut-offs that can be configured to automatically close in reverse are just part of innovation and versatility LeeBoy has designed into the 8530. Dual main operator control platforms with multi-position pivoting seating and ergonomic keypads include auto-throttle, auto-idle and pause functions. Screed control keypads and sliding walk boards provide screed operator convenient access to controls and mobility while on the job.

Components and access points are deliberately positioned for quick serviceability. The 8530 includes an actuator-driven hood lift for easy access to the engine and ground-level access doors, saving maintenance time and money.







## Modular Augers

Variable from 0-173 rpm and featuring a single point lube system, the dual augers are HRC 55-60 hardened,  $\frac{3}{4}$ " thick, 12" diameter, 12" pitch and are reversible. The modular auger design allows for a simple quick change of the assembly.



## Conveyor Innovation

Heavy-duty conveyor chains are easily adjusted from the front – no lifting required. Four bearing rear shaft with set screw retention adds durability and ease of service. Front conveyor sprockets with quad bearings offer longer wear and better chain tracking to eliminate material build-up. Backed by a 3,000 hour warranty, the slow moving, wide conveyors place material directly in front of the screed, reducing segregation.



## Hopper Features

The 9-ton, rounded design reduces cold material build-up while rear hopper wing wipers help prevent spillage. Independent control of one or both hopper wings allows paving alongside buildings or other obstructions with ease.



## Material Cut-Offs

Under auger material cut-offs are easily opened and closed via the main control panel or screed controls keypad to prevent spillage and reduce hand work. The cut-offs can be configured to automatically close when moving paver in reverse.



## Hydraulic Tow Points

The standard hydraulic tow point cylinders and linkage allows 8" of travel for quick and easy height adjustments, fully integrable with sonic grade and slope automation.

# Legend HD PRO Screed



The next generation of legendary screeds.

The LeeBoy 8530 commercial paver is equipped with the new Legend HD PRO Screed. Weighing 4,150 lbs, the Legend HD PRO Screed standard features include heavy-duty flight screws, heavy-duty crown and valley mechanism an AOA (angle-of-attack) adjuster with vertical height adjustment, sloping screed extensions and pre-strike off adjustment.

The main screed allows variable paving widths up to 15' 6". Electric dual vibrators mounted on the main screed frame increase paving material compaction. The main screed can be locked in the raised position for travel, service and overnight parking for additional stability. Slide-out walk boards and integrated toolboxes provide screed operators added maneuverability and convenience on the job site. Walk boards fold up and lock for transport and working requirements.

The Legend HD PRO Screed includes Hardox 450 screed plates for extended life, highway-class spring-loaded end gates and energy chains for added electrical wiring protection. Multiple adjustments ensure a quality mat while back-lit keypads provide screed operators convenient access to screed controls.

The screed is heated by a 14.4 kw generator that maintains heat for the screed and optional heated end gates. S-curve heating elements in the main screed with straight heating elements in the extensions cycle during heat-up to save horsepower and fuel consumption while paving. Heat cycles can be controlled by automatic time and temperature settings using the digital display on the control panel.







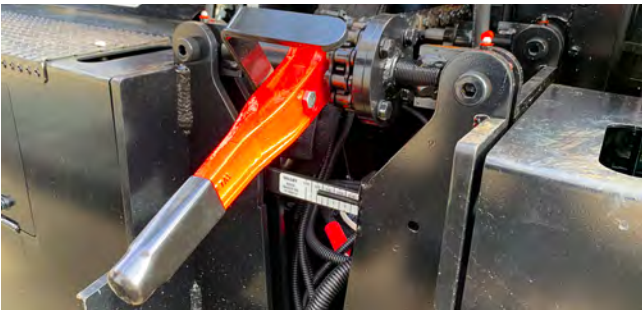
## Legend HD PRO Screed

The Legend HD PRO Screed weighs 4,150 lbs and includes the Hardox 450 screed plates with easy adjustments for all your paving needs. 2.5" chrome rods with multiple adjustments improve stability.



## Paving Width

Hydraulic screed extensions provide variable paving widths up to 15' 6" and includes automatic screed lock to prevent mat settling.



## Crown Adjustment

Easily adjust the lead crown without disturbing the rear crown. Simply remove the bolts to adjust the lead crown. Optional Power crown available.



## Energy Chains

An energy chain on each screed extension protects the wiring as the screed extension moves back and forth for added protection and less maintenance.



## End Gates and Sonics

The spring-loaded end gates are highway-class style and adjustable for matching pavement joints and seams. Mounts for the sonic augers sensors are adjustable for desired application. Heated end gates are optional.



## Grade and Slope

Sloping screed extensions standard. Slope meter optional. Topcon grade and slope configurations are available.

# Trust LeeBoy



## As dependable as your day is long.

A powerful, 125 hp turbo-charged Kubota engine equipped with the latest technologies and advanced emission systems allows optimum performance and efficiency while operating multiple functions simultaneously. Enhanced cooling systems increase water pump flow while robust lubrication systems produce more flow with higher pressure.

Proportional control of augers and conveyors enhance asphalt material delivery. Separate pumps for each function [charge, augers, conveyors, cylinders, propulsion] with proportional valves for extensions and tow cylinders optimizes hydraulic performance.

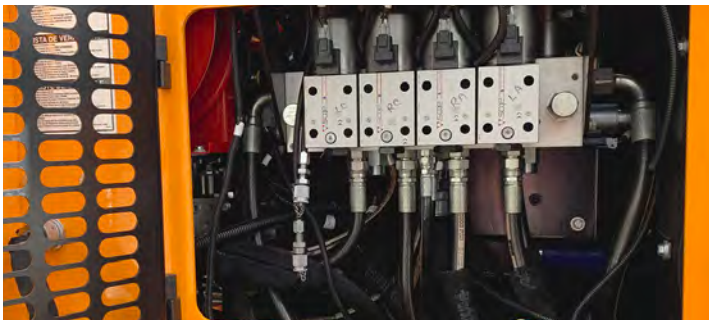
Straight-line tracking uses propel motor speed rings to provide close-looped speed control of left and right tracks that synchronizes track motor drive speeds.

The 8530 can be configured for low-deck or high-deck and has multiple pivoting seat positions. Dual operator control platforms accompanied by multi-position, pivoting seats ensure a comfortable yet productive work environment.

With 300+ sales and service locations within the USA and Canada, the vast LeeBoy Dealer network will keep you up and running – support that's driven by integrity and a passion for your success.

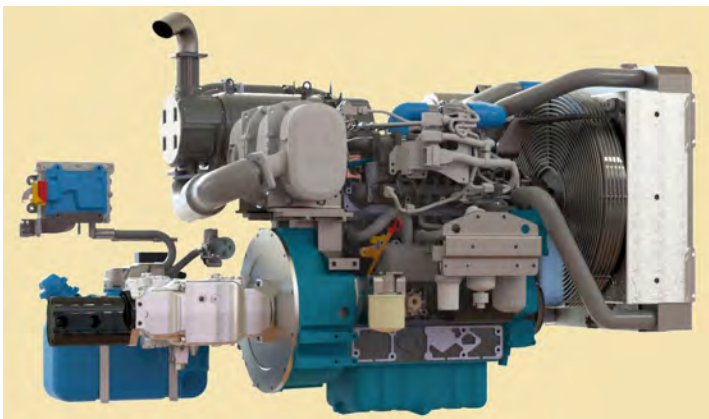






## Manifolds and Hydraulics

Manifolds are set up to allow for all options. Screed function manifolds are mounted onto the screed. Dual 77,000 BTU oil coolers improve reliability. Three tandem dedicated pumps for the various functions enhance the paver's hydraulic power.



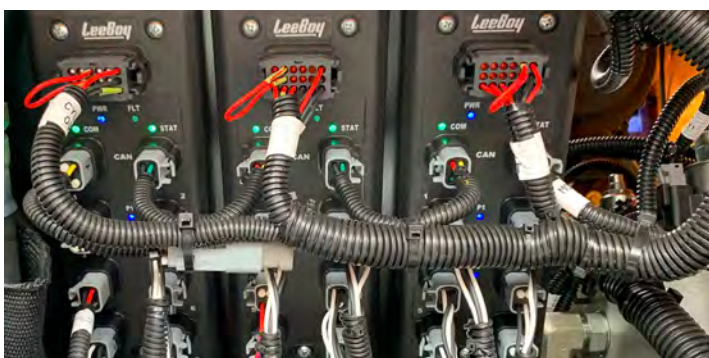
## Turbo-Charged Engine

This powerful 125 hp Kubota Tier 4 Final engine features remotely-mounted DOC+DPF+SCR after-treatment package with more flow, high pressure, enhanced cooling system and heat reduction. Engine optimization runs all functions at 2,030 rpm for fuel-efficient operation. The SCR systems and air cleaner is located below the hood line for better visibility.



## Cooling System

A heat shield for the exhaust manifold reduces heat radiation to the engine. Baffles and louvers direct hot air up and away from the operator. Six rib serpentine belt and pulleys with P-Max fan adds more air flow through the engine cooling system.



## Plus+1® Electrical System

State-of-the-art MURR I/O distributor blocks eliminates long wire runs, protects individual circuits and LED lighting aids in troubleshooting.



## Adjustable Push Roller

The oscillating push rollers adjust to five height positions for the perfect match to any asphalt truck engagement. A built-in scraper helps prevent asphalt building up on the push rollers as you pave.



# Ergonomic Control Platforms



Sleek design, improved visibility.



The stylish operator platform combined with the 8530's low-profile hood line gives operators heightened visibility with no line-of-sight disruption. Dual operator control platforms accompanied

by multi-position, pivoting seats ensures a comfortable yet productive work environment. The innovative control panel includes push-button keypad controls for paving functions and the latest in digital display technology. The display's wide-angle, anti-glare screen provides sunlight viewability that automatically adjusts brightness in darker settings. Each fully-contained control platform features a

comfortable seat, foot rest, ergonomic digital control panel. Modern amenities such as a USB port, cellphone or tablet pockets and magnetic cup holders can also be found.

The controls are always directly in front of the operator as the entire platform can be adjusted to six height positions. Operators can choose paving functions with a glance at symbols on the control panel keypad buttons, which also illuminate to show function status.

The air cleaner and emissions system is mounted below the low-profile hood line to reduce overall height and enhance the operator's ability to see and communicate with the material truck driver. The beacon light can easily be lowered as needed for overhead clearance.







## Low Profile, High Visibility

Adjustable operator platforms that pivot and swing out are just part of the improved visibility realized with the 8530. Remote DOC+DPF+SCR after-treatment emission system and air cleaner mounted below the hood line create a sleek low profile design.



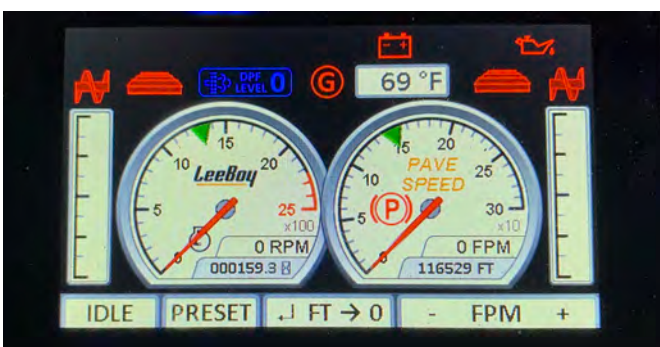
## Main Control Panel

The main control panel contains Plus+1 joystick controls, an emergency stop button, four keypad push-button quadrants of paving function controls, an auger speed dial and a color display unit. A lockable anti-vandalism cover protects the electronics.



## Display Controls

The color display controls all engine functions, monitors rpm and engine codes and notifies the operator of engine and paver function status. The operator can also set screed temperature, individual conveyor speeds and monitor system pressures through the display.



## Speed Control

The operator can set the desired paving or travel speed in the display controller and the automated system will pave consistently throughout the day.



## Screed Control Keypads

Screed operators will enjoy all paving controls at their fingertips. Simply press the backlit buttons to operate the tow, augers, slope, cut-offs and extensions. A horn and e-stop are also incorporated for operator convenience.



# LeeBoy 2 Year Standard Warranty

Peace of mind delivered with every machine.

You work hard—and for all the right reasons: pride, quality, reputation, prosperity. You expect your equipment to work as hard as you do, to be every bit as tough, productive and reliable as you are. Designing features that save service time and money is a big part of the LeeBoy tradition.



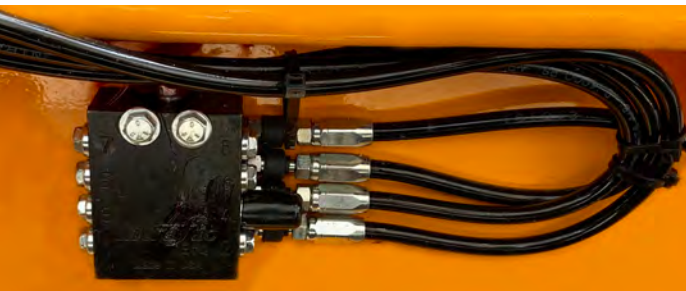
## Engine Hood Lift

Accessing the radiator and other engine components is as simple as energizing an actuator-driven hood.



## Conveyor Chain Adjust

No need to lift the conveyor bed to adjust the conveyor chains. This process can now be completed with a ratchet and socket from the front of the paver. Fine tuning conveyor chain tension takes only minutes.



## Augers Single Lube Point

The auger centralized grease point combines four lubrication points into one. When grease is pumped into the central point, valves distribute the grease evenly to the auger bearings and other moving parts.



## Fuel Filters Access

Mounting the fuel filter, fuel pump and fuel water separator on the hopper door panel provides easy access for servicing. This panel provides convenient access for changing the oil and filter as part of regular maintenance.

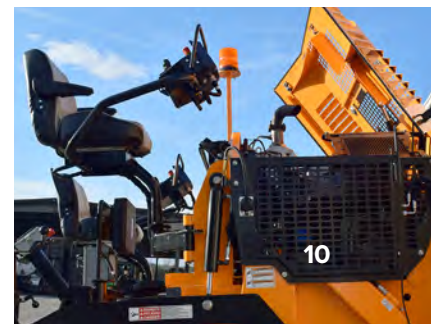


# 8530 Asphalt Paver



## Product Specifications

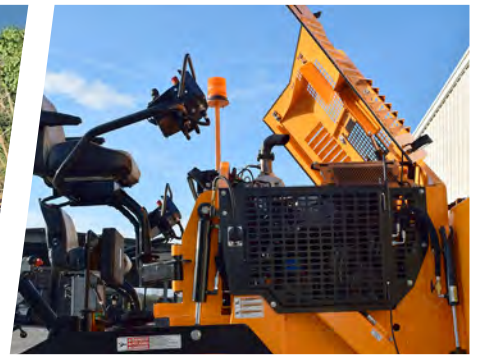
<b>Dimensions</b>	<ul style="list-style-type: none"> <li>- Length: 15' (4.57 m)</li> <li>- Width: 8' 6" (2.59 m) transport 10' (3.05 m) hopper wings down</li> <li>- Height: Low Deck: 6' 8"   High Deck: 7' 9"</li> <li>- Total Weight: 22,520 lbs. (10,215 kg)</li> </ul>	<b>Operator's Controls</b>	<ul style="list-style-type: none"> <li>- Dual adjustable, independent control stations</li> <li>- Colored LED, sunlight viewable control screens with digital readouts</li> </ul>
<b>Engine</b>	<ul style="list-style-type: none"> <li>- Kubota turbocharged diesel, Tier 4 Final – 125 hp (93.2 kw)</li> </ul>	<b>Steering</b>	<ul style="list-style-type: none"> <li>- Dual electronic steering controls</li> <li>- Electronically controlled pumps operated by the forward/reverse joysticks</li> </ul>
<b>Capacities</b>	<ul style="list-style-type: none"> <li>- Fuel: 32 gallons (121 l)</li> <li>- Hydraulic reservoir: 25 gallons (94.6 l)</li> <li>- Washdown tank: 7 gallons (26.5 l)</li> <li>- DEF tank: 5 gallons (18.9 l)</li> </ul>	<b>Washdown System</b>	<ul style="list-style-type: none"> <li>- Electric HD pump with hose and two hose reels</li> </ul>
<b>Hopper</b>	<ul style="list-style-type: none"> <li>- Hopper size: 9 ton (8,164 kg)</li> </ul>	<b>Push Rollers</b>	<ul style="list-style-type: none"> <li>- Two rollers with sealed bearings mounted to allow pivoting on frame, built in material scrapers</li> <li>- Vertically adjustable oscillating push rollers</li> </ul>
<b>Paving Widths</b>	<ul style="list-style-type: none"> <li>- Variable up to 15' 6" (4.72 m)</li> </ul>	<b>Track Drive System</b>	<ul style="list-style-type: none"> <li>- Hydrostatically powered, self-cleaning crawler type</li> <li>- Track size: 14" w x 87" l (.36 x 2.20 m) poly</li> <li>- Paving speed: 0 to 150' per minute (1.7 mph)</li> <li>- Travel speed: 0 to 300' per minute (3.4 mph)</li> </ul>
<b>Paving Depths</b>	<ul style="list-style-type: none"> <li>- Manual flight screws positioned on the screed to control material thickness, depth: 0" to 8"</li> </ul>	<b>Additional Standard Equipment</b>	<ul style="list-style-type: none"> <li>- Gauge package</li> <li>- Actuator-driven hood lift</li> <li>- Quick-folding safety beacon</li> <li>- Operating light package</li> <li>- Integrated tool boxes</li> <li>- Vandalism protection covers</li> <li>- 2 Year Standard Product Warranty</li> </ul>
<b>Screed</b>	<ul style="list-style-type: none"> <li>- Legend HD PRO Screed, free floating</li> <li>- Weight: 4,150 lbs</li> <li>- Consisting of a main screed and two hydraulically operated screed extensions</li> <li>- Spring-loaded end gates standard</li> <li>- Sloping screed extensions standard</li> <li>- Equipped with two electric vibrators, 4100 RPM</li> </ul>	<b>Optional Equipment</b>	<ul style="list-style-type: none"> <li>- Screed extension vibration</li> <li>- Rubber track, continuous</li> <li>- Heated endgates</li> <li>- Slope meter</li> <li>- 3:1 flight screw adjusters</li> <li>- Truck hitch</li> <li>- Power crown</li> <li>- Hydraulically extendable oscillating push roller</li> <li>- Wiring only, grade controls (TopCon)</li> <li>- Sonic grade control, one side (TopCon P-32 system)</li> <li>- Dual grade control (TopCon P-32 system)</li> <li>- Dual grade and slope (TopCon P-32 system)</li> <li>- Other options available, visit LeeBoy.com</li> </ul>
<b>Screed Heat</b>	<ul style="list-style-type: none"> <li>- Legend electric screed heat, 14.4 kw generator</li> <li>- Electric timer and automatic temperature control</li> <li>- Sealed s-curve elements in main screed and sealed blade-style elements in extensions</li> </ul>		
<b>Screed Crown/ Valley</b>	<ul style="list-style-type: none"> <li>- Equipped with a crown/invert adjustment</li> <li>- Includes a levelling indicator for the operator</li> </ul>		
<b>Material Handling</b>	<ul style="list-style-type: none"> <li>- Two hydraulically operated under auger material cutoffs can close in reverse</li> <li>- Single point lube system</li> <li>- Two 12" (.305 m) independent hydraulically operated cast augers</li> </ul>		
<b>Operator's Platform</b>	<ul style="list-style-type: none"> <li>- Full machine width platform, slide out extensions</li> <li>- Pivoting, swing out seats and control panels</li> </ul>		





# LeeBoy®

## Trust LeeBoy. As Dependable as Your Day is Long.



# LeeBoy®

ST Engineering LeeBoy, Inc. ■ 500 Lincoln County Parkway Extension ■ Lincolnton, NC 28092 ■ 704.966.3300  
[www.LeeBoy.com](http://www.LeeBoy.com)

LeeBoy and the LeeBoy logo are registered trademarks of ST Engineering LeeBoy, Inc. Equipment model names, slogans and subsidiary logos appearing in this collateral may be registered trademarks or the trademarks of ST Engineering LeeBoy, Inc. The technical data contained herein is subject to change due to continuous engineering and development. Accordingly, LeeBoy reserves the right to modify at any time. © 2020 ST Engineering LeeBoy, Inc. All rights reserved. BAPG-10001-EN

